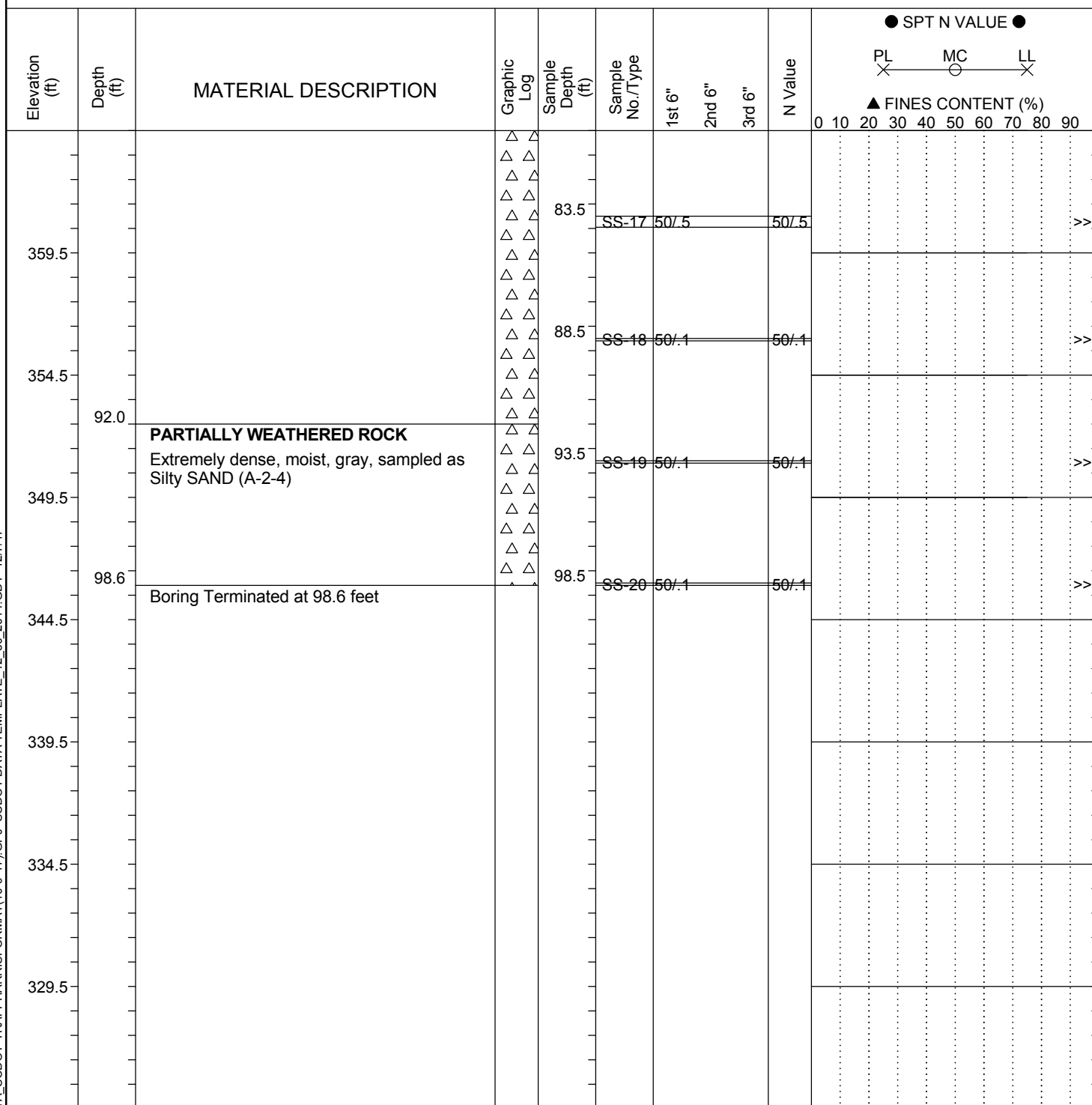




Project ID:	029208				County:	Lexington			Boring No.:	B-10		
Site Description:	I-26 WIDENING PROJECT MM85-MM101							Route:	S-49			
Eng./Geo.:	M. Bailey		Boring Location:	83+70.99		Offset:	3' LT		Alignment:	BRIDGE 7		
Elev.:	444.5 ft		Latitude:	34.1927211		Longitude:	-81.3491926		Date Started:	9/6/2017		
Total Depth:	98.6 ft		Soil Depth:	98.6 ft		Core Depth:	0 ft		Date Completed:	9/9/2017		
Bore Hole Diameter (in):	2.25		Sampler Configuration				Liner Required:	Y (N)		Liner Used:	Y (N)	
Drill Machine:	DIEDRICH D5		Drill Method:	2.25 HSA		Hammer Type:	Automatic		Energy Ratio:	84%		
Core Size:			Driller:	Patriot		Groundwater:	TOB GNE		24HR	GNE		



## LEGEND

SAMPLER TYPE		DRILLING METHOD	
SS - Split Spoon	NQ - Rock Core, 1-7/8"	HSA - Hollow Stem Auger	RW - Rotary Wash
UD - Undisturbed Sample	CU - Cuttings	CFA - Continuous Flight Augers	RC - Rock Core
AWG - Rock Core, 1-1/8"	CT - Continuous Tube	DC - Driving Casing	

SCS DOT ECS-DATA SCDOT-TRAPPHARRISFORMAT(10-9-17).GPJ SCDOT DATA TEMPLATE 12 30 2014.GDT 12/7/17